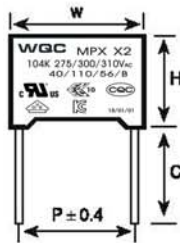
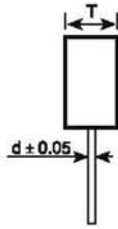


金属化聚丙烯膜抗干扰电容器(带放电电阻, X2类, 275Vac, 300Vac, 310Vac)
Metallized polypropylene film Interference Suppression capacitor with discharge resistor (Class X2, 275Vac, 300Vac, 310Vac)

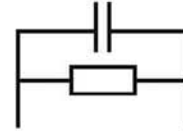
■ 外形图 Outline Drawing



w±0.4 H±0.4 T±0.4



■ 电路结构图 Electrical Connection



■ 特点

- X2电容器与放电电阻内部并联组成
- 优异的阻燃性能
- 广泛用于电源跨线路等抗干扰场合

■ Features

- Internal parallel connection from X2 cap to discharge resistor
- Excellent active and passive flame resistant abilities
- Widely used in across-the-line, interference suppression circuit, etc.

■ 安全认证 Safety Approvals

●		CQC (中国)	GB/T 14472-1993, X2, 275Vac,300Vac,310Vac, 0.0010uF~3.3uF, 40/110/56/B 证书号(Certificate No.):CQC14001113971
●		ENEC-VDE (欧盟)	EN 60384-14:2006-04, X2, 275Vac,300Vac,310Vac, 0.0010uF~3.3uF, 40/110/56/B 证书号(Certificate No.):40040406
●		UL/CUL (美国/加拿大)	UL 60384-14:2009, X2, 275Vac,300Vac,310Vac, 0.0010uF~3.3uF, 40/110/56/B 证书号(Certificate No.):E466405,CCN:FOWX2/8
●		KC (韩国)	KC 60384-14/1(2014-09), X2, 275Vac,300Vac,310Vac, 0.0010uF~3.3uF, 40/110/56/B 证书号(Certificate No.):SU03073-14001/14002/14003
●	CB TEST CERTIFICATE		IEC 60384-14:2005, X2, 275Vac,300Vac,310Vac, 0.0010uF~3.3uF, 40/110/56/B 证书号(Certificate No.):CN29302

■ 技术要求 Specifications

电容器类别 Class	X2类		
气候类别/阻燃等级 Climatic Category/Passive Flammability Category	40/110/56/B		
工作温度范围 Operating Temperature Range	-40℃ ~ +110℃		
额定电压 Rated Voltage	275Vac, 300Vac, 310Vac, 50/60Hz		
最大连续交流电压 Maximum continuous DC voltage	310Vac, 50/60Hz		
最大连续直流电压 Maximum continuous DC voltage	630 Vdc		
电容量范围 Capacitance Range	0.0010μF~3.3μF		
电容量偏差 Capacitance Tolerance	± 10%(K)、 ± 20%(M)		
放电电阻范围/偏差 Resistance range/ Tolerance	470kΩ ~20MΩ , ± 10%		
耐电压 Voltage Proof	引线之间 Between Terminals:	2 000Vdc(2s) C _R < 1.0μF	
		1 800Vdc(2s) C _R > 1.0μF	
	极壳之间 Between Terminals To Case:	2 120Vac(1min)	
损耗角正切 Dissipation Factor	0.22μF < C _R < 0.47μF	< 10 x 10 ⁻⁴ (1kHz, 20℃)	< 20 x 10 ⁻⁴ (10kHz, 20℃)
	0.47μF < C _R < 1.0μF	< 20 x 10 ⁻⁴ (1kHz, 20℃)	< 40 x 10 ⁻⁴ (10kHz, 20℃)
	1.0μF < C _R < 3.3μF	< 30 x 10 ⁻⁴ (1kHz, 20℃)	-----

产品编码说明 Part number system

18 位产品代码如下(The 18 digits part number is formed as follow):

1 2 3 4 5 6 7 8 9 10 11 12 13 14 15 16 17 18

C	5	1															
---	---	---	--	--	--	--	--	--	--	--	--	--	--	--	--	--	--

第 1~3 位 型号代码(Digit 1~3 Type Code):

型号代码:C51

第 4~5 额定电压代码(Digit 4~5 Rated Voltage Code):

	A	B	C	D	E	F	G	H	J	K	L	M	N
1			16	20				50	63			1100	
2	100	125	160	200	250	315	400	500	630	800	120		
3	1000	1250	1600	2000	2500	3150	4000	5000	6300	8000	1200	1400	
	P	Q	R	S	T	U	V	W	X	Y			
1	240	300	330	440	540	600	700	850	900				
2	275	305	350	450	520		760						
3	280	310		480									

说明: 参考日本 JIS 标准, 字母加数位表示交流, 数字加字母表示直流, 例如 A2 表示 100VAC, 2A 表示 100VDC

Explanation: Refer to JIS standard, Letter and then number indicate AC, but number and then Letter indicate DC, for example, 2A indicate 100VDC, A2 indicate 100VAC.

第 6~8 容值代码(Digit 6~8 Capacitance Expressed in 3-digit code 3 Code):

The first 2 digits indicate significant figures, and the third digit specifies the number of zero to follow.

前两位表示基数, 第三个数字表示其后零的个数

This gives the capacitance in picofarads. 容量值单位为皮法

For examples 举例: $102=10 \times 10^2 \text{PF}=1,000\text{PF}=1.0\text{nF}=0.001\mu\text{F}$ $105=10 \times 10^5 \text{PF}=1,000,000\text{PF}=1000\text{nF}=1\mu\text{F}$

第 9 容量偏差代码(Digit 9 Capacitance Tolerance Code):

公差 Tolerance	±5%	±10%
代码 Code	J	K

第 10~11 两个数位的脚距代码(Digit 10~11 Pitch expressed by Case two digits Code):

Box Type 盒装型

Pitch 脚距	7.5	10	12.5	15	20	22.5	27.5	37.5	42.5	55
Case No. 壳体代码	B*	C*	G*	D*	S*	E*	F*	J*	K*	P*

第 12 引线加工型代码(Digit 12 Lead Form Code):

Lead Type

Code 代码	L	H	K	N	M	T	S
Lead Type 引线型式	长脚	短脚	内弯青蛙脚	内弯直脚	外弯直脚	Taping	Customer Special Require

第 13~15 引线长度和偏差以 3 个数字代码表示

Digit 13~15 Lead Length(Straight) and Tolerance of Lead Length(straight): Expressed in 3-Letter Code

Example 举例: Code 代码 035:35/10=3.5mm 230:230/10=23mm

第 16 放电电阻阻值代码

Digit 16 Value code of the discharge resistor code

电阻值 R _N	470KΩ	680KΩ	820KΩ	1MΩ	1.2MΩ	1.5MΩ	2.2MΩ	3.3MΩ	4.7MΩ	6.8MΩ	10MΩ	20MΩ
代码 Code	A	B	C	D	E	F	H	L	N	P	S	T

第 17~18 内部特征码

Digit 17~18 Internal use Code

■外形尺寸 Dimensioms(mm)

275Vac/300Vac/310Vac							
CN (μ F)	w	H	T	P	d	BOX TYPE	Part number
0.22	26.5	16.0	7.0	22.5	0.8	E2	C50Q3224KE2L230#**
0.33	26.5	17.0	8.5	22.5	0.8	E3	C50Q3334KE3L230#**
0.47	26.5	19.0	10.0	22.5	0.8	E4	C50Q3474KE4L230#**
0.68	26.5	20.0	11.0	22.5	0.8	E5	C50Q3684KE5L230#**
1.0	26.5	22.0	12.0	27.5	0.8	E6	C50Q3105KE6L230#**
0.47	32.0	18.0	11.0	27.5	0.8	F5	C50Q3474KF5L230#**
0.68	32.0	20.0	11.0	27.5	0.8	F1	C50Q3684KF1L230#**
1.0	32.0	20.0	13.0	27.5	0.8	F2-3	C50Q3105KF2L230#**
1.5	32.0	22.0	13.0	27.5	0.8	F2-3	C50Q3155KF2L230#**
2.2	31.0	25.0	14.0	27.5	0.8	F3	C50Q3205KF3L230#**
3.3	31.0	33.0	18.0	27.5	0.8	F12	C50Q3335KFAL230#**

1."**"表示内部特征代码.Internal use.

2."#"对应的电阻值表。Digit16:"#" =Value code of the discharge resistor(tolerance+/-10%) .